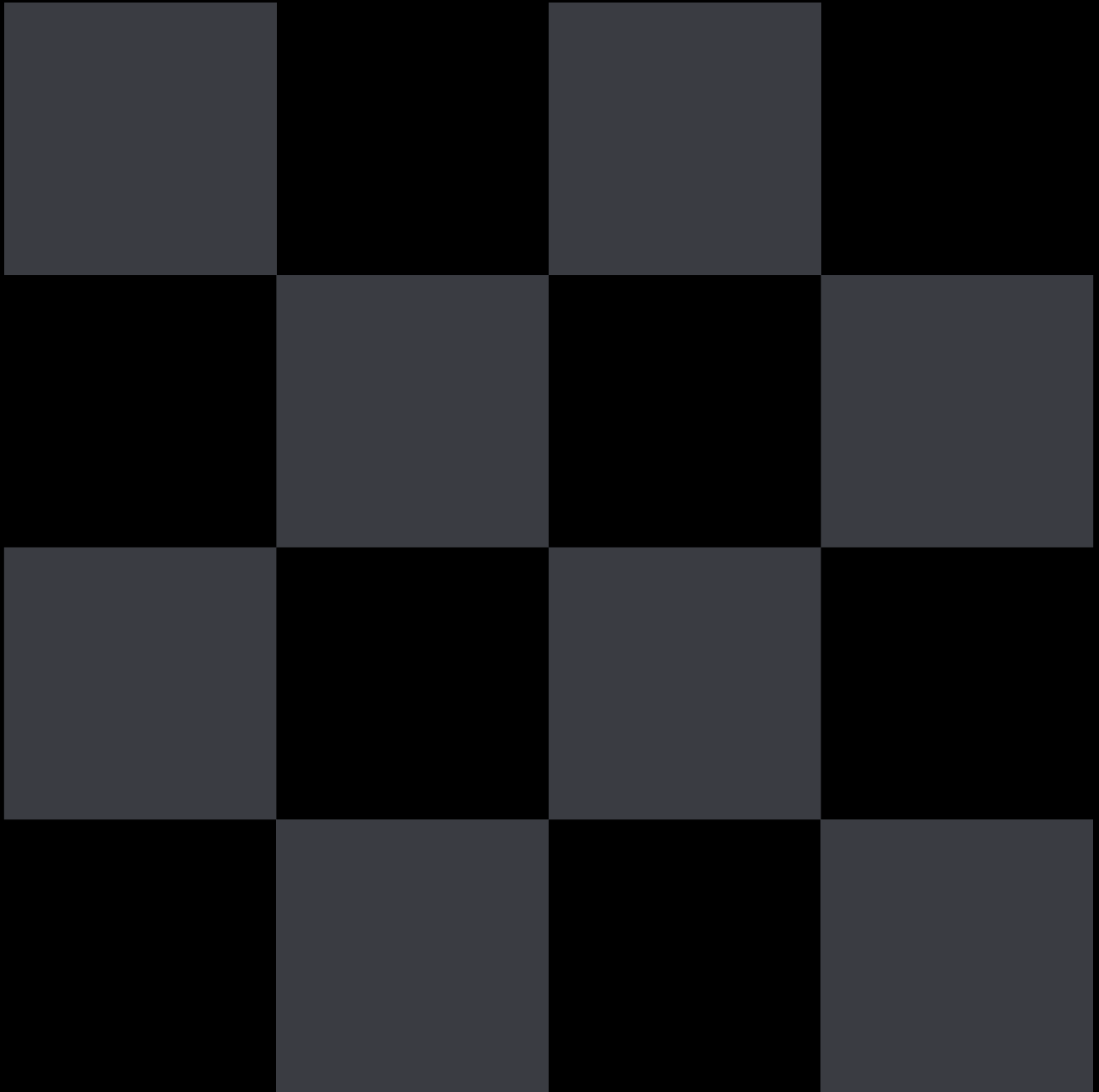


# ELEMENTS GRID



# GRID Use Case Scenario

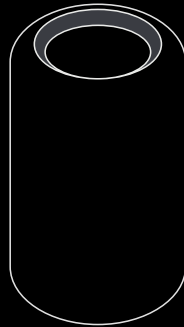
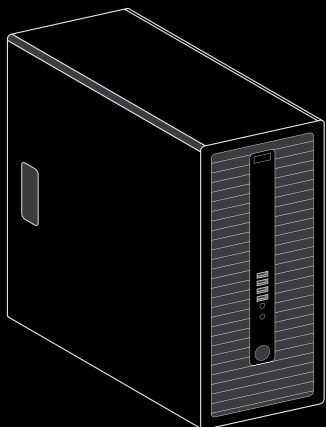
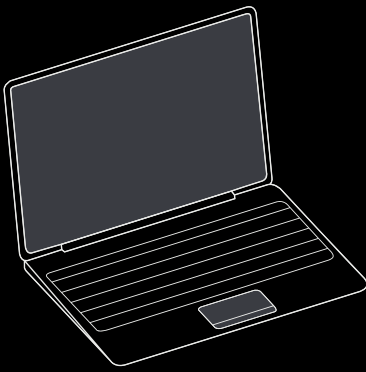
ELEMENTS GRID, our node-based distributed file system platform, provides an ultra-fast software-defined storage that is easily scalable to multiple petabyte in capacity and a throughput of numerous GByte/s.



- ← →
- Review
  - Log
  - Rough Cut
  - Up- and Download



- ↑ ↓
- Editing
  - Compositing
  - VFX





# The most innovative take on Scale-Out NAS

## Chassis

- 2U or 4U rack-mountable with up to 24 hard drives or solid state drives per node
- 2U supports SSD drives (2.5")
- 4U supports SSD and SAS/SATA drives (3.5")

## Capacity

- multiple Exabytes in a single filesystem
- starts with as little as 48 Terabyte

## Speed

- multiple Gigabyte/s

## Scalability

- add more nodes to gain capacity, performance and availability
- scalable with no downtime required

## Weight

- approx. 35,0 kg (including 24 x 2,5"hard disks) / per 2U node
- approx. 55,0 kg (including 24 x 3,5"hard disks) / per 4U node

## Power

- 1320 W (primary) / per node

## Dimensions

- L x W x H 725mm x 465mm x 90mm / per 2U node
- L x W x H 725mm x 465mm x 180mm / per 4U node

## Add capacity and performance – without downtime

Without the need to shut down the file system, nodes can be added on the fly. Appending nodes increases not only capacity but also performance and throughput - while it is unnecessary to rebuild the file system.

## No single point of failure, no data loss

Running with EMFS (ELEMENTS Media File System), ELEMENTS GRID is a remarkably fault tolerant high-reliability server cluster with no single point of failure. The distributed file system with automated data integrity check increases data security - when a disk or even an entire nodes fails, all data is still fully available.

## Optimized for media with unique workflow tools

ELEMENTS GRID with EMFS is designed for highly demanding media workflows by providing high throughput and low latencies, supporting the native file system client and all standard protocols (SMB, AFP, NFS). In addition, GRID is equipped with the full set of ELEMENTS' unique workflow enhancement tools, including native Avid support. Even the Media Library can be enabled.



ELEMENTS HEADQUARTERS

Parkstr. 31  
40477 Düsseldorf  
Germany  
+49 211 749 5350  
info@elements.tv  
<http://elements.tv>

ELEMENTS US

7083 Hollywood Blvd,  
Los Angeles, CA 90028  
USA  
+1 415 336 9362  
info@elements.tv  
<http://elements.tv>

ELEMENTS MEDIA SOLUTIONS LTD

Lower Ground Floor  
40 Bloomsbury Way  
WC1A 2SE London  
United Kingdom  
info@elements.tv  
<http://elements.tv>