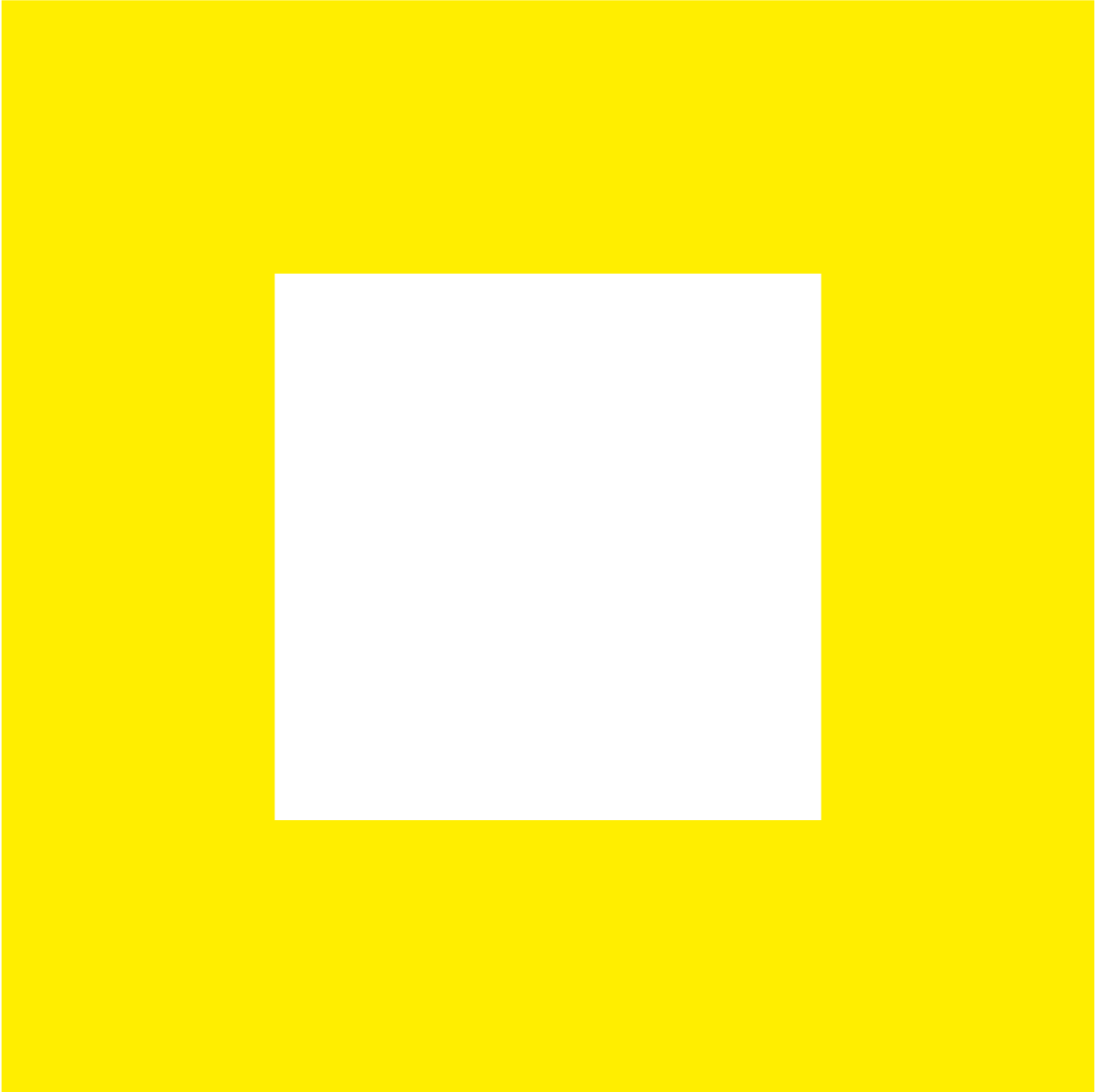


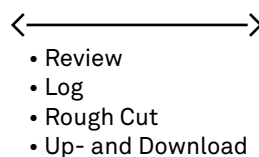
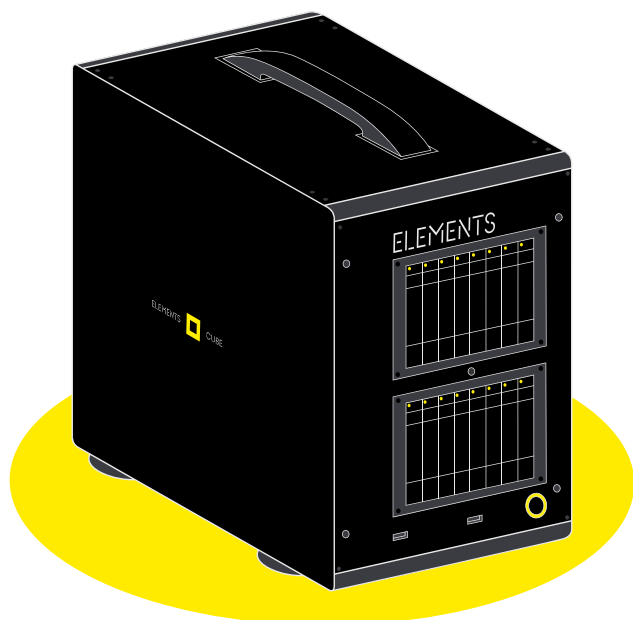
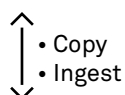
ELEMENTS CUBE



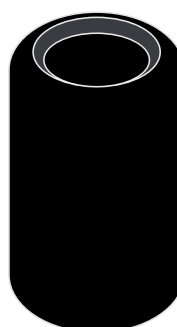
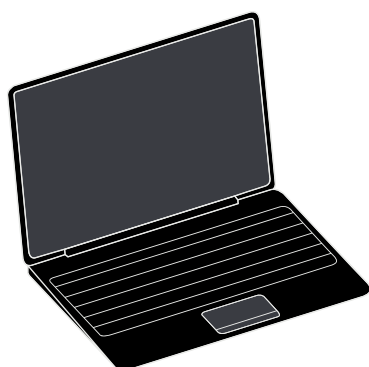
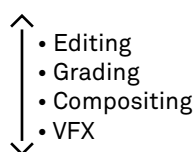
human-centered media storage

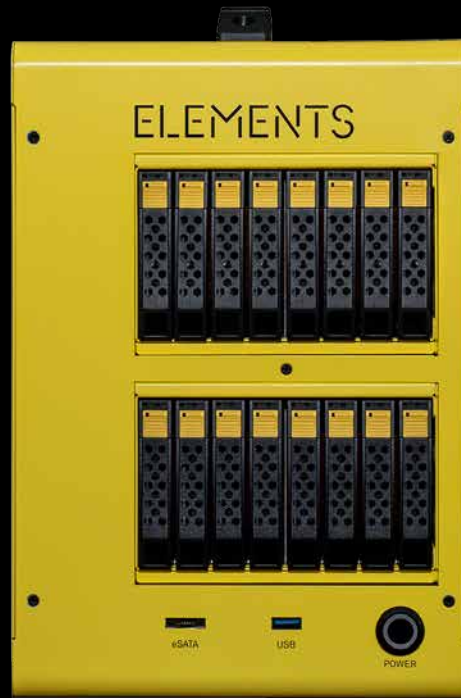
CUBE Use Case Scenario

ELEMENTS CUBE combines all of ELEMENTS' unique features in an ultra-small form factor chassis for storing, managing and organizing assets in the field and on the go.



MAM
ELEMENTS Media Library





Tech-Specs

Ultra-portable media storage with editing capabilities and MAM

Chassis

- desktop chassis up to 16 drives

Capacity

- up to 976 TB (NVMe)
- up to 240 TB (SSD)

Speed

- 12 GB/s (NVMe)
- 4 GB/s (SSD) (internal)

Scalability

- direct-attach multiple clients

Weight

- starts with. 7,96kg / 18 lbs (including 16 x 2,5" B hard disks)
- final weight depends on individual set-up

Power

- 700 W (primary, NVMe)
- 450 W (primary, SSD)

Dimensions

- L x W x H 410mm x 205mm x 330mm

Increase productivity on set

New footage created on set can be transferred directly from the camera onto the ELEMENTS CUBE portable media storage. Simultaneously you can start to preview, pre-select, comment and even edit the clips - from any device via the optional Media Library.

Rough-cut on the go – fully compatible

Rough-cuts created with the Media Library on ELEMENTS CUBE can easily be transferred to virtually every professional editing application, including Avid Media Composer and Adobe Premiere. Even all comments, remarks and drawings added in the Media Library are fully visible and accessible by those high-end editing suites.



syslink GmbH
Parkstraße 31
40477 Düsseldorf
Germany

+49 211 749 5350
info@elements.tv
<http://elements.tv>